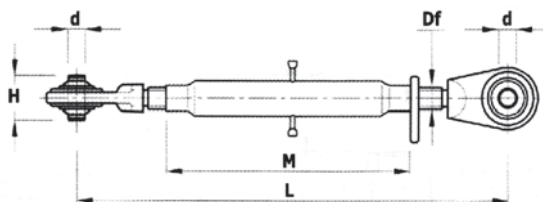




**05**

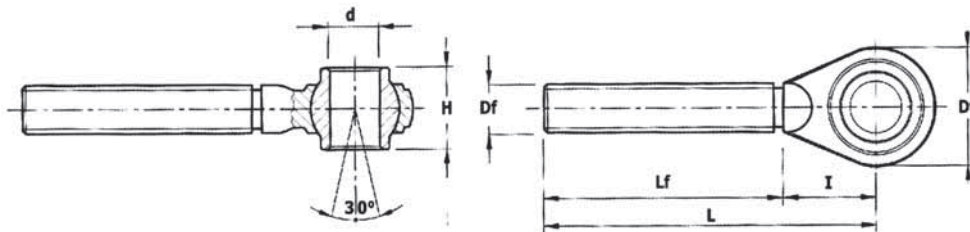
**Attacchi  
terzi punti**

**BRACCIO 3° PUNTO COMPLETO**



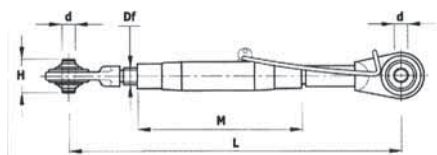
Art.	Cat.	d (A12)	H (H11)	Df	M	L = min.	L = max.	Tirante filettato
UA01 0001	1	19	44	M 22x2,5	150	260	350	UA011001 DX - UA012001 SX
UA01 0002	1	19	44	M 22x2,5	230	345	490	UA011001 DX - UA012001 SX
UA01 0003	1	19	44	M 22x2,5	280	390	540	UA011001 DX - UA012001 SX
UA01 0004	1	19	44	M 22x2,5	300	410	560	UA011001 DX - UA012001 SX
UA01 0005	1	19	44	M 24x2,5	320	430	570	UA011002 DX - UA012002 SX
UA01 0006	1	19	44	M 24x2,5	370	480	620	UA011002 DX - UA012002 SX
UA01 0007	1	19	44	M 24x2,5	470	580	720	UA011002 DX - UA012002 SX
UA01 0008	1	19	44	M 27x3	220	330	450	UA011007 DX - UA012007 SX
UA01 0009	1	19	44	M 27x3	320	430	630	UA011007 DX - UA012007 SX
UA01 0010	1	19	44	M 27x3	370	480	680	UA011007 DX - UA012007 SX
UA01 0011	1	19	44	M 27x3	400	510	710	UA011007 DX - UA012007 SX
UA01 0012	1	19	44	M 27x3	430	540	740	UA011007 DX - UA012007 SX
UA01 0013	1	19	44	M 27x3	470	580	780	UA011007 DX - UA012007 SX
UA01 0014	1	19	44	M 27x3	570	680	880	UA011007 DX - UA012007 SX
UA01 0015	1/2	19/25,4	44/51	M 27x3	470	585	800	UA011007 DX - UA012007 SX
UA01 0016	2	25,4	51	M 27x3	220	340	460	UA011009 DX - UA012009 SX
UA01 0017	2	25,4	51	M 27x3	320	460	680	UA011009 DX - UA012009 SX
UA01 0018	2	25,4	51	M 27x3	400	520	740	UA011009 DX - UA012009 SX
UA01 0019	2	25,4	51	M 27x3	430	550	770	UA011009 DX - UA012009 SX
UA01 0020	2	25,4	51	M 27x3	500	620	840	UA011009 DX - UA012009 SX
UA01 0021	2	25,4	51	M 30x3	360	480	710	UA011011 DX - UA012011 SX
UA01 0022	2	25,4	51	M 30x3	400	520	750	UA011011 DX - UA012011 SX
UA01 0023	2	25,4	51	M 30x3	430	550	780	UA011011 DX - UA012011 SX
UA01 0024	2	25,4	51	M 30x3	470	590	820	UA011011 DX - UA012011 SX
UA01 0025	2	25,4	51	M 30x3	500	620	850	UA011011 DX - UA012011 SX
UA01 0026	2	25,4	51	M 30x3	530	650	880	UA011011 DX - UA012011 SX
UA01 0027	2	25,4	51	M 30x3	560	680	910	UA011011 DX - UA012011 SX
UA01 0028	2	25,4	51	M 30x3	610	730	960	UA011011 DX - UA012011 SX
UA01 0029	2	25,4	51	M 30x3	730	850	1080	UA011011 DX - UA012011 SX
UA01 0030	2	25,4	51	M 36x3	400	525	740	UA011014 DX - UA012014 SX
UA01 0031	2	25,4	51	M 36x3	460	585	800	UA011014 DX - UA012014 SX
UA01 0032	2	25,4	51	M 36x3	520	645	860	UA011014 DX - UA012014 SX
UA01 0033	2	25,4	51	M 36x3	570	695	910	UA011014 DX - UA012014 SX
UA01 0034	2	25,4	51	M 36x3	400	555	840	UA011015 DX - UA012015 SX
UA01 0035	2/3	25,4/32	51/51	M 36x3	400	555	840	UA011015 DX - UA012015 SX
UA01 0036	3	32	51	M 36x3	460	615	900	UA011016 DX - UA012016 SX
UA01 0037	2	25,4	51	M 40x3	500	635	860	UA011017 DX - UA012017 SX
UA01 0038	2	25,4	51	M 40x3	620	755	980	UA011017 DX - UA012017 SX

## TIRANTI FILETTATI CON ROTULA SFERICA



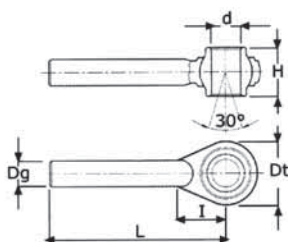
Art.	Cat.	d (A12)	H (H11)	Df	L	Lf	l	Dt
UA01 1001 DX	1	19	44	M 22 x 2,5	165	115	50	50
UA01 2001 SX	1	19	44	M 22 x 2,5	165	115	50	50
UA01 1002 DX	1	19	44	M 24 x 2,5	165	115	50	58
UA01 2002 SX	1	19	44	M 24 x 2,5	165	115	50	58
UA01 1003 DX	1	19	44	M 24 x 2,5	165	115	50	62
UA01 2003 SX	1	19	44	M 24 x 2,5	165	115	50	62
UA01 1004 DX	1	19	44	M 22 x 3	165	115	50	62
UA01 2004 SX	1	19	44	M 22 x 3	165	115	50	62
UA01 1005 DX	1	19	44	M 22 x 3	205	155	50	62
UA01 2005 SX	1	19	44	M 22 x 3	205	155	50	62
UA01 1006 DX	2	25,4	51	M 22 x 3	220	165	55	75
UA01 2006 SX	2	25,4	51	M 22 x 3	220	165	55	75
UA01 1007 DX	1	19	44	M 27 x 3	205	115	50	58
UA01 2007 SX	1	19	44	M 27 x 3	205	115	50	58
UA01 1008 DX	1	19	44	M 27 x 3	205	115	50	62
UA01 2008 SX	1	19	44	M 27 x 3	205	115	50	62
UA01 1009 DX	2	25,4	51	M 27 x 3	220	165	55	75
UA01 2009 SX	2	25,4	51	M 27 x 3	220	165	55	75
UA01 1010 DX	1	19	44	M 30 x 3	225	175	50	62
UA01 2010 SX	1	19	44	M 30 x 3	225	175	50	62
UA01 1011 DX	2	25,4	51	M 30 x 3	220	165	55	75
UA01 2011 SX	2	25,4	51	M 30 x 3	220	165	55	75
UA01 1012 DX	1	19	44	M 30 x 3,5	225	175	50	62
UA01 2012 SX	1	19	44	M 30 x 3,5	225	175	50	62
UA01 1013 DX	2	25,4	51	M 30 x 3,5	220	165	55	75
UA01 2013 SX	2	25,4	51	M 30 x 3,5	220	165	55	75
UA01 1014 DX	2	25,4	51	M 36 x 3	220	165	55	80
UA01 2014 SX	2	25,4	51	M 36 x 3	220	165	55	80
UA01 1015 DX	2	25,4	51	M 36 x 3	270	200	70	96
UA01 2015 SX	2	25,4	51	M 36 x 3	270	200	70	96
UA01 1016 DX	3	32	51	M 36 x 3	270	200	70	96
UA01 2016 SX	3	32	51	M 36 x 3	270	200	70	96
UA01 1017 DX	2	25,4	51	M 40 x 3	230	170	60	80
UA01 2017 SX	2	25,4	51	M 40 x 3	230	170	60	80

## BRACCIO CON BLOCCAGGIO A MOLLA



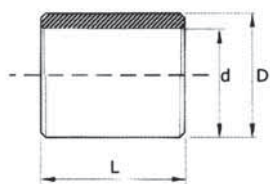
Art.	Cat.	d	H (H 11)	Df	M	L = min.	L = max.	Impiego
UA01 3001	1/2	20,2/25,4	44/44	UNC 1" 1/8 7G	318	50	58	John Deere

## TIRANTE A GAMBO ROTONDO GREZZO CON ROTULA SFERICA



Art.	Cat.	d (A 12)	H (H 11)	Dg (Ø)	L	I	Dt
UA01 4002	1	19	44	22	165	50	58
UA01 4003	1	19	44	25	165	50	62
UA01 4004	1	19	44	25	205	50	58
UA01 4005	1	19	44	27	205	50	62
UA01 4006	1	19	44	29	225	50	62
UA01 4007	2	25,4	51	28	220	55	75
UA01 4008	2	25,4	51	30	220	55	75
UA01 4009	2	25,4	51	36	220	55	80
UA01 4010	2	25,4	51	37	270	75	96
UA01 4011	3	32	51	37	270	75	96
UA01 4012	2	25,4	51	43	230	60	80

## BUSSOLE DI RIDUZIONE

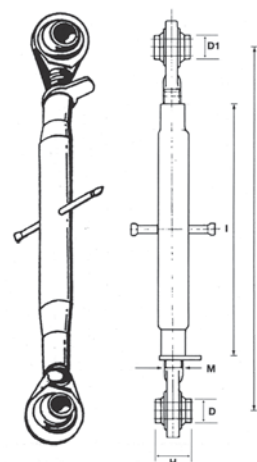


Art.	Cat.	D	d	L	Impiego
UA01 5002	2/1	28,4	22,1	44	Bracci sollevam. Inferiori
UA01 5001	3/2	37	28,4	44	
UA01 5003	2/1	25,4	19	51	3° Punti
UA01 5004	3/2	32	25,4	51	



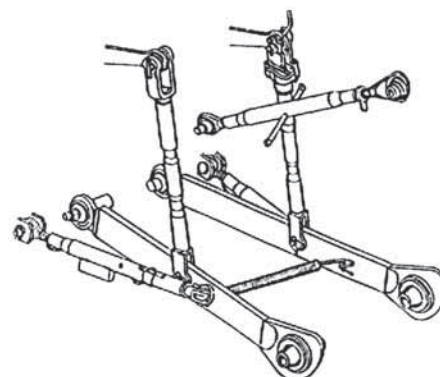
### BRACCI TERZI PUNTI SERIE "IMPORT" ZINCATI

ART.	Cat.	Rotule Ø mm.	filetto	Lunghezza manicotto mm.	Lunghezza mm.	
					Min	Max
UA01 0105	1	19	1" 1/8 UNC	275	380	530
UA01 0110	1	19	1" 1/8 UNC	320	430	600
UA01 0115	1	19	1" 1/8 UNC	350	455	635
UA01 0120	1	19	1" 1/8 UNC	380	495	675
UA01 0125	1	19	1" 1/8 UNC	450	555	735
UA01 0130	1	19	1" 1/8 UNC	500	590	770
UA01 0135	2	25,4	1" 1/8 UNC	320	455	645
UA01 0140	2	25,4	1" 1/8 UNC	350	485	685
UA01 0145	2	25,4	1" 1/8 UNC	400	540	780
UA01 0150	2	25,4	1" 1/8 UNC	450	580	820
UA01 0155	2	25,4	1" 1/8 UNC	500	625	865
UA01 0160	2	25,4	1" 1/8 UNC	550	680	920



### GRUPPO COMPLETO ATTACCO A 3 PUNTI

Art.	Impiego
UA01 7001	Fiat 605 C
UA01 7002	Fiat 311 - 355 - 411 C - 455 C
UA01 7003	Fiat 150 - 450 R
UA01 7004	Fiat 640 R

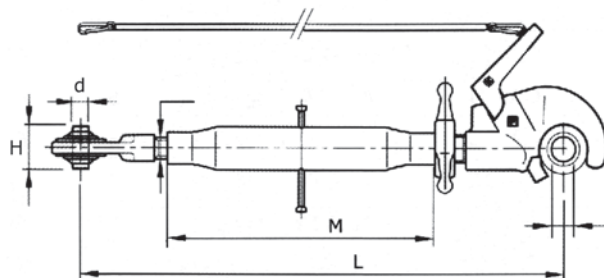


### GRUPPO COMPLETO ATTACCO A 3 PUNTI PER TRATTORI KUBOTA-ISEKI

Art.	Impieghi	Descrizione
UA01 7010	Kubota	Lunghezza bracci 520 mm. centro rotule
UA01 7015	Iseki	Lunghezza bracci 520 mm. centro rotule



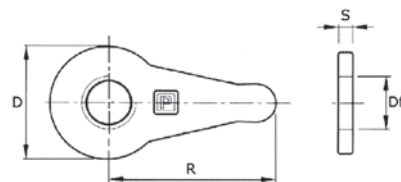
**BRACCIO 3° PUNTO CON GANCIO RAPIDO COMPLETO DI CORDA E ROTULA SFERICA**



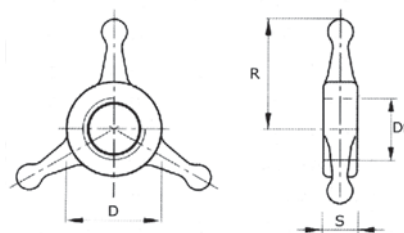
Art.	Cat.	d (A12)	H (H11)	Df	M	L = min.	L = max.	Tirante Fil. Sx	Gancio «Rapid» Dx
UA01 8001	2	25,4	51	M 27 x 3	320	530	740	UA012009 SX	UA021001 DX
UA01 8002	2	25,4	51	M 27 x 3	370	560	790	UA012009 SX	UA021001 DX
UA01 8003	2	25,4	51	M 27 x 3	430	610	860	UA012009 SX	UA021001 DX
UA01 8004	2	25,4	51	M 27 x 3	470	650	900	UA012009 SX	UA021001 DX
UA01 8005	2	25,4	51	M 27 x 3	570	750	1000	UA012009 SX	UA021001 DX
UA01 8006	2	25,4	51	M 30 x 3	360	550	790	UA012011 SX	UA021002 DX
UA01 8007	2	25,4	51	M 30 x 3	430	610	850	UA012011 SX	UA021002 DX
UA01 8008	2	25,4	51	M 30 x 3	470	650	890	UA012011 SX	UA021002 DX
UA01 8009	2	25,4	51	M 30 x 3	530	710	950	UA012011 SX	UA021002 DX
UA01 8010	2	25,4	51	M 30 x 3	560	740	980	UA012011 SX	UA021002 DX
UA01 8011	2	25,4	51	M 30 x 3	610	790	1030	UA012011 SX	UA021002 DX
UA01 8012	2	25,4	51	M 30 x 3	730	910	1150	UA012011 SX	UA021002 DX
UA01 8013	2	25,4	51	M 36 x 3	400	610	840	UA012014 SX	UA021004 DX
UA01 8014	2	25,4	51	M 36 x 3	460	670	900	UA012014 SX	UA021004 DX
UA01 8015	2	25,4	51	M 36 x 3	520	730	960	UA012014 SX	UA021004 DX
UA01 8016	2	25,4	51	M 36 x 3	570	780	1010	UA012014 SX	UA021004 DX
UA01 8017	3	32	51	M 36 x 3	400	630	900	UA012016 SX	UA021007 DX
UA01 8018	3	32	51	M 36 x 3	460	690	960	UA012016 SX	UA021007 DX
UA01 8019	3	32	51	M 36 x 3	520	750	1020	UA012016 SX	UA021007 DX
UA01 8020	3	32	51	M 36 x 3	570	800	1070	UA012016 SX	UA021007 DX
UA01 8021	2	25,4	51	M 40 x 3	500	710	970	UA012017 SX	UA021008 DX
UA01 8022	2	25,4	51	M 40 x 3	620	830	1090	UA012017 SX	UA021008 DX

## CONTRODADI PER BRACCIO 3° PUNTO

Art.	Mod.	Df	D	R	S
UA01 9001	Aletta	M 22 x 2,5	45	60	6
UA01 9002	Aletta	M 24 x 2,5	45	60	6
UA01 9003	Aletta	M 24 x 3	45	60	6
UA01 9004	Aletta	M 27 x 3	45	60	6
UA01 9005	Aletta	M 30 x 3	45	60	6
UA01 9006	Aletta	M 30 x 3,5	45	60	6
UA01 9007	Aletta	M 36 x 3	60	88	10
UA01 9008	Aletta	M 40 x 3	60	88	10

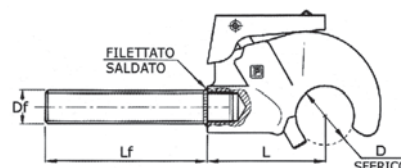


Art.	Mod.	Df	D	R	S
UA02 0001	Stella	M 22 x 2,5	34	30	12
UA02 0002	Stella	M 24 x 2,5	34	30	12
UA02 0003	Stella	M 24 x 3	34	30	12
UA02 0004	Stella	M 27 x 3	40	45	18
UA02 0005	Stella	M 30 x 3	40	45	18
UA02 0006	Stella	M 30 x 3,5	40	45	18
UA02 0007	Stella	M 36 x 3	52	45	18
UA02 0008	Stella	M 40 x 3	52	45	18

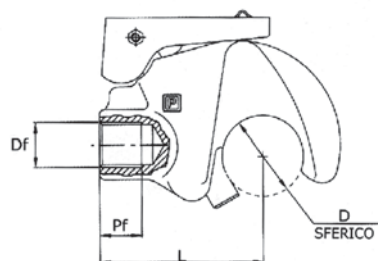


## GANCI AUTOMATICI SUPERIORI CON FILETTO

Art.	Cat.	D	Df (Dx)	Lf	L
UB02 1001	2	50	M 27 x 3	180	105
UB02 1002	2	50	M 30 x 3	180	105
UB02 1003	2	50	M 30 x 3,5	180	105
UB02 1004	2	50	M 36 x 3	180	105
UB02 1005	3/2	60	M 30 x 3	180	132
UB02 1006	3/2	60	M 30 x 3,5	180	132
UB02 1007	3/2	60	M 36 x 3	180	132
UB02 1008	3/2	60	M 40 x 3	180	132

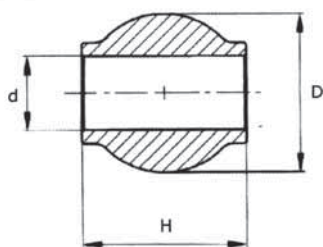


## GANCI AUTOMATICI SUPERIORI A SALDARE - CAT. 2/3 PER 3° PUNTI IDRAULICI



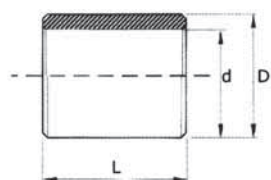
Art.	Cat.	D	Df (DX)	Pf	L
UB02 2001	2	50	Foro Ø 12	15	105
UB02 2002	2	50	M 20 x 1,5	25	105
UB02 2003	2	50	M 27 x 2	25	105
UB02 2004	2	50	M 30 x 2	25	105
UB02 2005	3/2	60	Foro Ø 20	180	25
UB02 2006	3/2	60	M 27 x 2	180	45
UB02 2007	3/2	60	M 36 x 2	180	45

## ROTULE PER GANCI RAPIDI SUPERIORE



Art.	Cat.	d (A 12)	D	H (h 11)
UB02 3001	1	19	38	44
UB02 3002	2	25,4	50	51
UB02 3003	3/2	25,4	60	51
UB02 3004	3	32	60	51
UB02 3005	3	32	60	51
Tipo speciale con trattamento lunga durata				

## BUSSOLE DI RIDUZIONE



Art.	Cat.	D	d	L	Impiego
UA01 5003	2/1	25,4	19	51	3° Punti
UA01 5004	3/2	32	25,4	51	

## CORDA DI COMANDO PER GANCIO SUPERIORE

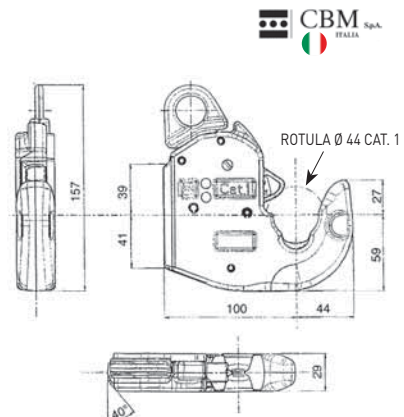


Art.	Lunghezza Tot. mm.
UB02 4001	1500

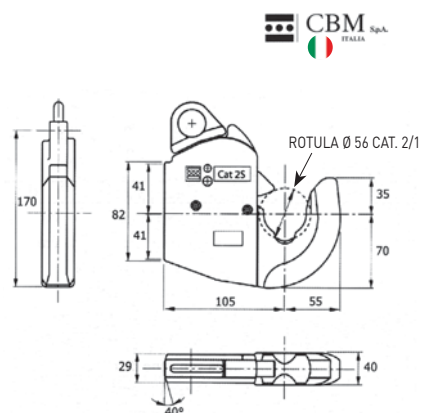


## GANCI AUTOMATICI PER BRACCI INFERIORI A TRE PUNTI

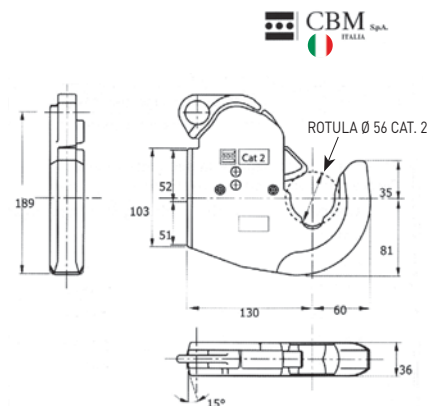
Art.	Descrizione	Potenza trattore
UB03 0004	Gancio automatico cat. 1 - Dx-Sx	HP. 18 - 60
UB03 0114	Ricambio gruppo otturatore cat. 1	



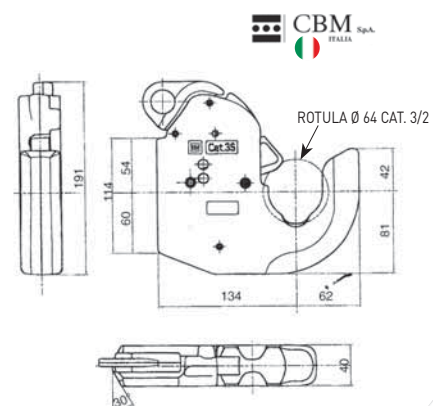
Art.	Descrizione	Potenza trattore
UB03 0001	Gancio automatico cat. 2 S - Dx-Sx	HP. 30 - 90
UB03 0111	Ricambio gruppo otturatore cat. 2 S	



Art.	Descrizione	Potenza trattore
UB03 0002	Gancio automatico cat. 2 - Dx-Sx sede rotula temprata ad alta frequenza	HP. 80 - 150
UB03 0112	Ricambio gruppo otturatore cat. 2	

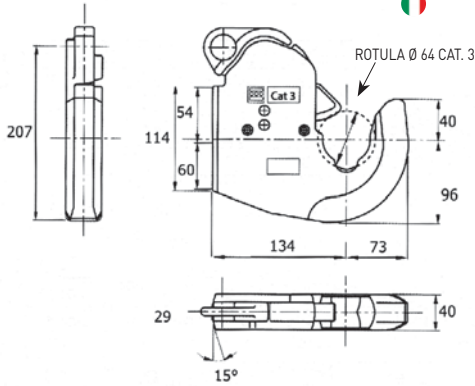


Art.	Descrizione	Potenza trattore
UB03 0005	Gancio automatico cat. 3 S - Dx-Sx	HP. 90 - 180
UB03 0113	Ricambio gruppo otturatore cat. 3	

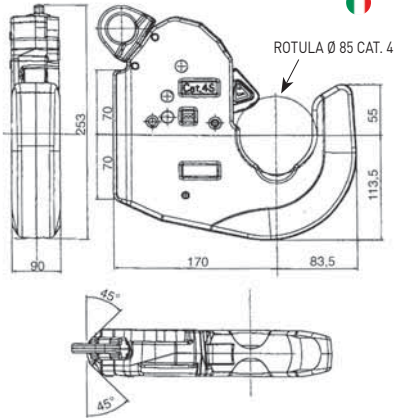


N.B.: È anche indicato per attacchi anteriori.

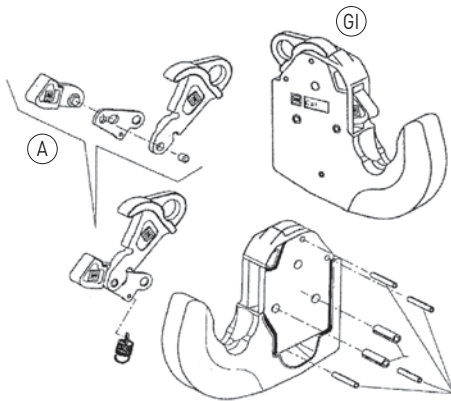
## GANCI AUTOMATICI PER BRACCI INFERIORI A TRE PUNTI



Art.	Descrizione	Potenza trattore
<b>UB03 0003</b>	Gancio automatico cat. 3 - Dx-Sx sede rotula temprata ad alta frequenza	HP 110 - 260
<b>UB03 0113</b>	Ricambio gruppo otturatore cat. 3	

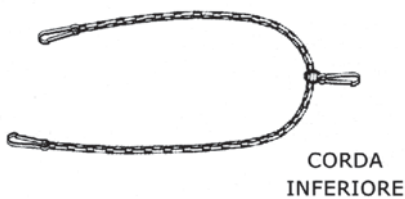


Art.	Descrizione	Potenza trattore
<b>UB03 0006</b>	Gancio automatico cat. 4 - Dx-Sx sede rotula temprata ad alta frequenza	HP 180 - 360
<b>UB03 0116</b>	Ricambio gruppo otturatore cat. 4	



Cat. 1	Cat. 2S	Cat. 2	Cat. 3S	Cat. 3	Cat. 4	Descrizione
Art.	Art.	Art.	Art.	Art.	Art.	
<b>UB03 0004</b>	<b>UB03 0001</b>	<b>UB03 0002</b>	<b>UB03 0005</b>	<b>UB03 0003</b>	<b>UB03 0006</b>	Gancio completo GI
<b>UB03 0114</b>	<b>UB03 0111</b>	<b>UB03 0112</b>	<b>UB03 0113</b>	<b>UB03 0113</b>	<b>UB03 0116</b>	Gruppo otturatore A

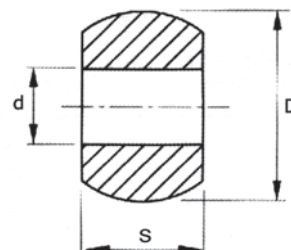
## CORDA DI COMANDO PER GANCIO INFERIORE



Art.	Lunghezza Tot. mm.
<b>UB02 4002</b>	4400

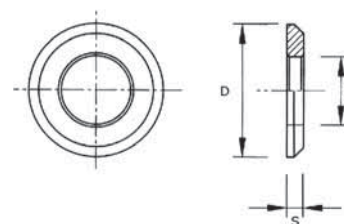
## ROTULE PER GANCI RAPIDI INFERIORI

Art.	Cat.	d (A 12)	D	S
UB02 9000	1	22,1	44	35
UB02 9001	2/1	22,1	56	45
UB02 9002	2	28,4	56	45
UB02 9003	3/2	28,4	64	45
UB02 9004	3	37	64	45
UB02 9006	3	37	64	45
	Tipo speciale con trattamento lunga durata			
UB02 9005	-	38	64	45
UB02 9008	4	37	85	57,5



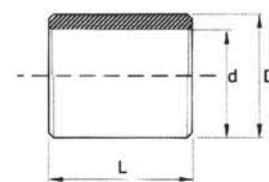
## DISTANZIALI PER ROTULE

Art.	Cat.	d (A 12)	D	S
UB02 8001	2	28,4	56	7
UB02 8002	3/2	28,4	64	7
UB02 8003	3	37	64	7



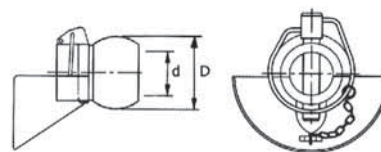
## BUSSOLE DI RIDUZIONE

Art.	Cat.	D	d	L	Impiego
UA01 5002	2/1	28,4	22,1	44	Bracci sollevam. Inferiori
UA01 5001	3/2	37	28,4	44	



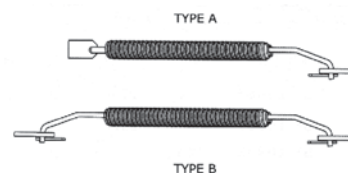
## CONI GUIDA CON ROTULA E SPINA A SCATTO

Art.	Cat.	d (A 12)	12
UB02 7001	2	28,4	56
UB02 7002	3/2	28,4	64
UB02 7003	3	37	64

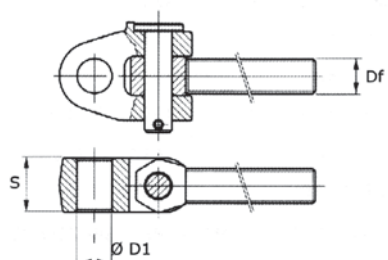


## DISTANZIABILE REGOLABILE A MOLLA PER BRACCI INFERIORI

Art.	Cat.	Type	L = min.	L = max
UB02 6001	2	A	500	720
UB02 6002	3	B	600	900

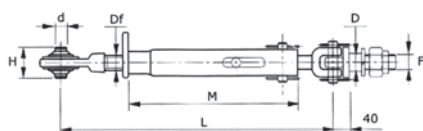


## ATTACCHI SNODATI PER 3° PUNTO



Art.	Cat.	Df	Ø D1	S
UD03 1001	2	M 30 x 3 Dx	25,4	51
UD03 1002	2	M 30 x 3 Sx	25,4	
UD03 1003	-	M 30 x 3 Dx	28	
UD03 1004	-	M 30 x 3 Sx	28	
UD03 1005	-	M 30 x 3 Dx	30	
UD03 1006	-	M 30 x 3 Sx	30	
UD03 1007	3	M 30 x 3 Dx	32	
UD03 1008	3	M 30 x 3 Sx	32	
UD03 1009	1	M 30 x 3,5 Dx	19	51
UD03 1010	1	M 30 x 3,5 Sx	19	
UD03 1011	-	M 30 x 3,5 Dx	20	
UD03 1012	-	M 30 x 3,5 Sx	20	
UD03 1013	-	M 30 x 3,5 Dx	22,1	
UD03 1014	-	M 30 x 3,5 Sx	22,1	
UD03 1015	2	M 30 x 3,5 Dx	25,4	
UD03 1016	2	M 30 x 3,5 Sx	25,4	
UD03 1017	-	M 36 x 3 Dx	-	51
UD03 1018	-	M 36 x 3 Sx	-	
UD03 1019	-	M 36 x 3 Dx	-	
UD03 1020	-	M 36 x 3 Sx	-	
UD03 1021	2	M 36 x 3 Dx	-	
UD03 1022	2	M 36 x 3 Sx	-	
UD03 1023	-	M 36 x 3 Dx	-	
UD03 1024	-	M 36 x 3 Sx	28	
UD03 1025	-	M 36 x 3 Dx	30	
UD03 1026	-	M 36 x 3 Sx	30	
UD03 1027	3	M 36 x 3 Dx	32	
UD03 1028	3	M 36 x 3 Sx	32	

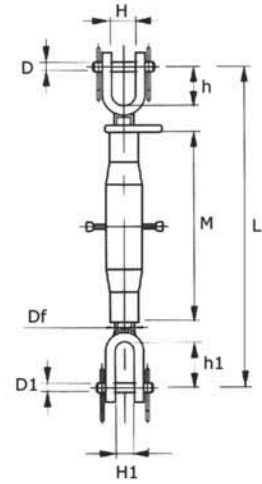
## STABILIZZATORI LATERALI RIGIDI PER TRATTORI



Art.	L.		M	Df	d (A 12)	H (h 11)	D	F	Asola
	Min.	Max							
UD03 5001	470	620	355	M 27 x 3	19	44	20	M 20 x 2,5	No
UD03 5002	440	600	315	M 27 x 3	19	44	28	M 24 x 2	Si
UD03 5003	440	600	315	M 27 x 3	25,4	51	28	M 24 x 2	Si
UD03 5004	510	670	395	M 27 x 3	19	44	28	M 24 x 2	Si
UD03 5005	510	670	395	M 27 x 3	25,4	51	28	M 24 x 2	Si

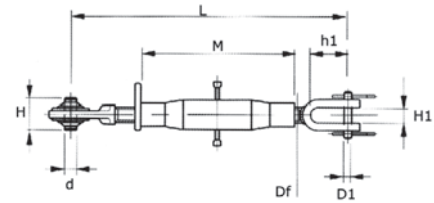
## BRACCIO DI SOLLEVAMENTO LATERALE REGISTRABILE

Art.	L.		M	Df	D	D1	H	h	H1	h1
	Min.	Max								
UD03 6001	380	520	230	M 22 x 2,5	18	18	30	37	24	72
UD03 6002	400	480	230	M 22 x 2,5	18	26	30	37	24	93
UD03 6003	440	600	260	M 24 x 2,5	18	18	40	70	24	72
UD03 6004	530	690	370	M 24 x 2,5	18	22	30	37	24	72
UD03 6005	500	690	320	M 27 x 3	18	18	40	70	24	72



## BRACCIO DI SOLLEVAMENTO LATERALE CON FORCELLA E TIRANTE

Art.	L.		M	Df	d (A 12)	D1	H (h1)	H1	h1
	Min.	Max							
UD03 7001	380	530	225	M 24 x 3	19	18	44	24	72
UD03 7002	380	530	225	M 24 x 3	22,1	18	35	24	72
UD03 7003	420	570	275	M 24 x 3	19	18	44	24	72
UD03 7004	420	570	275	M 24 x 3	22,1	18	35	24	72
UD03 7005	510	660	360	M 24 x 3	19	18	44	24	72
UD03 7006	580	730	430	M 24 x 3	22,1	18	35	24	72



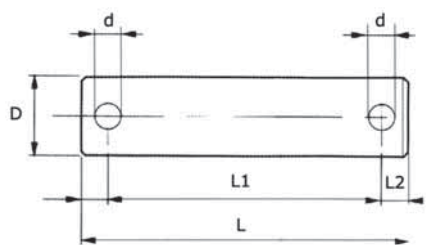
## BRACCI DI SOLLEVAMENTO LATERALE REGISTRABILE

Art.	L. Min.-Max mm.	Adattabile	Rif
UD03 7500	540 - 620	M.F. 35-135-148 240-65-765	18 43 47 M93
UD03 7510	560 - 670	M.F. 165 - 175 - 178 185 - 265	89 - 35 - 70 M92/89 76 - 49 - M95
UD03 7520	630 - 780	M.F. 265 - 275 - 285	18 - 63 - 053 - M92
UD03 7530	580 - 640	Ford 2000 - 3000 3600 - 3610	-
UD03 7540	720 - 810	Ford 5000 - 5600 6000 - 6600	-
UD03 7550	720 - 840	Ford 4000	-



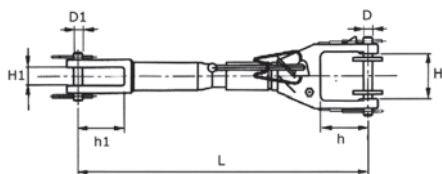


## PERNO ZINCATO PER BRACCI DI SOLLEVAMENTO



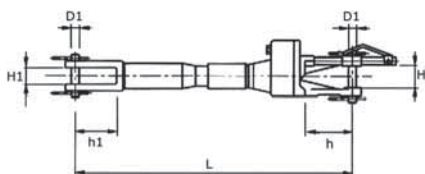
Art.	D	L	L1	L2	d
UD03 8001	18	64	52	6	6
UD03 8002	18	74	62	6	6
UD03 8003	18	84	72	6	6
UD03 8004	18	94	82	6	6
UD03 8005	20	71	58	6	6
UD03 8006	20	81	68	6	6
UD03 8007	22	64	52	6	6
UD03 8008	24	90	77	6	6
UD03 8009	24	104	91	6	6
UD03 8010	26	66	57	6	6
UD03 8011	28	104	91	6	6

## BRACCIO DI SOLLEVAMENTO LATERALE DESTRO REGISTRABILE



Art.	L.		Fil. int.	D	D1	H	h	H1	h1
	Min.	Max							
UD03 9001	380	480	M 24 x 2	18	18	44	70	24	72
UD03 9002	450	550	M 24 x 2	18	18	44	70	24	72
UD03 9003	500	600	M 24 x 2	18	18	44	70	24	72
UD03 9004	400	480	M 24 x 2	18	18	44	70	24	93

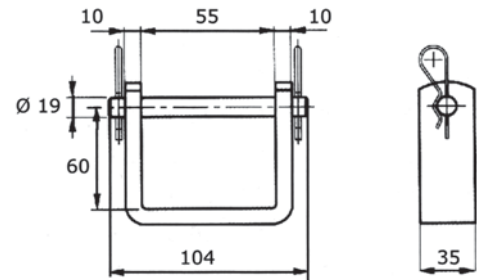
## BRACCIO DI SOLLEVAMENTO LATERALE DESTRO REGISTRABILE



Art.	L.		Fil. int.	D	D1	H	h	H1	h1
	Min.	Max							
UD04 0001	560	700	M 27 x 2	24	24	45	80	24	93
UD04 0002	660	800	M 27 x 2	24	24	45	80	24	93

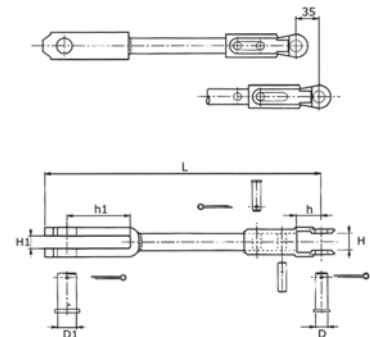
## CAVALLOTTO CON PERNO ZINCATO PER ATTREZZI AGGANCIABILI AL SOLLEVATORE DEI TRATTORI

Art.
UD04 1001



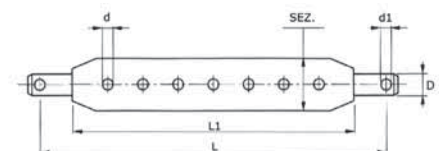
## BRACCIO DI SOLLEVAMENTO LATERALE SINISTRO - FIAT

Art.	L = min.	L = max	D	D1	H1	h1	H1	h1	Impiego	Ric orig. Fiat
UD04 2001	375	410	18	18	25	36	24	72	Lat. FIAT 411	586024
UD04 2002	400	435	18	26	25	36	24	93	Lat. FIAT 605 c	4983310

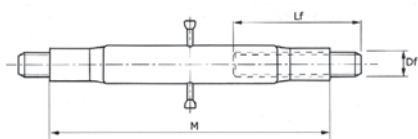


## BARRE DI TRAINO

Art.	Cat.	D	Sez.	L (± 2,5)	L (± 1,5)	D	N. fiori	d1
UE04 3001	1	22	70 x 25	770	680	22	7	11
UE04 3002	2	28	80 x 30	890	780	28	7	11

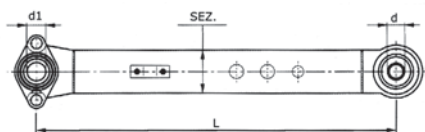


## TENDITORI



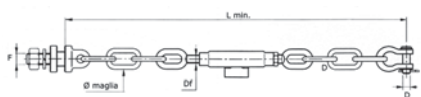
Art.	Df	M	Lf
UE04 4001	M 22 x 2,5	230	110
UE04 4002	M 22 x 2,5	280	110
UE04 4003	M 24 x 2,5	320	130
UE04 4004	M 27 x 3	320	160
UE04 4005	M 30 x 3	360	160
UE04 4006	M 30 x 3	430	160
UE04 4007	M 36 x 3	460	160

## BRACCI DI SOLLEVAMENTO INFERIORE PER TRATTORI FIAT



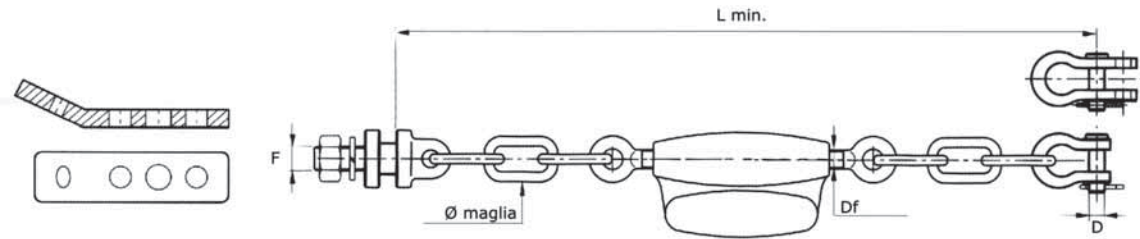
Art.	D	D1	L	Sez.	Impiego trattori	Rif. orig. Fiat
UE04 5001	22,1	22,1	720	60 x 20	211-215-250-300 r.	4992590 SX - 4992589 DX
UE04 5002	22,1	22,1	770	75 x 20	350-411-415-450- 500-480 r.	595164 - 5104699
UE04 5003	28,4	28,4	940	90 x 20	512-513-615-175- 650-750 r.	595812
UE04 5004	28,4	22,1	940	90 x 20	550-550S-640 r.	4981567
UE04 5005	21,1	22,1	735	75 x 14	312-311-355- 411-455 c.	569242 - 5103005
UE04 5006	21,1	22,1	740	90 x 20	605-505-555 c.	4952211
UE04 5007	28,4	22,1	820	75 x 14	480 r.	4982413
UE04 5008	28,4	26	925	100 x 20	780-680-880 r.	5109973
UE04 5009	28,4	26	960	100 x 20	70-80/70-80DT r.	5131564

## CATENE IMBRIGLIAMENTO E STABILIZZATORI PER TRATTORI



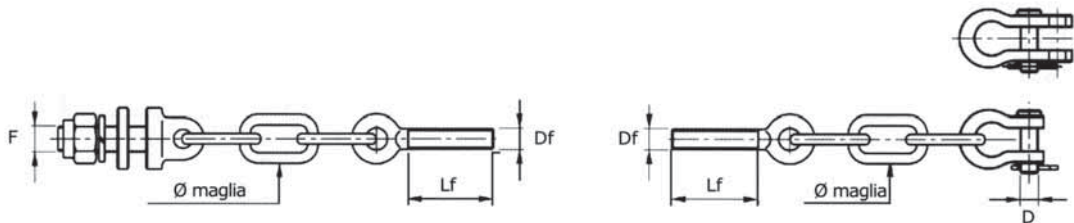
Art.	n. maniglie	Ø maglia	L = min.	D	Df	F	Impiego trattori
UE04 6001	1 + 1	12	440	14	M 20 x 2,5	20	Same
UE04 6002	2 + 2	12	570	14	M 20 x 2,5	20	Same
UE04 6003	3 + 3	12	690	14	M 20 x 2,5	20	Same
UE04 6004	3 + 2	12	620	14	M 20 x 2,5	20	Same
UE04 6005	3 + 1	10	460	14	M 16 x 2	18	Same
UE04 6006	2 + 1	14	500	16	M 20 x 2,5	24	Same explorer
UE04 6007	3 + 2	12	620	14	M 20 x 2,5	20	Landini (con piastra)
UE04 6008	2 + 2	12	570	14	M 20 x 2,5	20	Landini (con piastra)

## CATENE IMBRIGLIAMENTO PER SOLLEVATORI



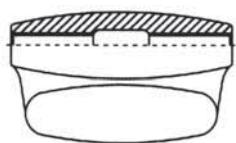
Art.	N. maniglie	Ø maniglie	L = min.	D	Df	F	Imp. trat.	Rif. orig. Fiat
UE04 7001	1 + 1	14	430	14 - 14	M 16 x 2	22	Fiat	5130634
UE04 7002	1 + 1	12	370	14 - 14	M 16 x 2	22	Fiat	5131390
UE04 7003	2 + 1	12	450	14 - 14	M 16 x 2	22	Fiat	5116366
UE04 7004	2 + 2	12	430	12	M 16 x 2	18	Fiat	5002501
UE04 7005	3 + 3	12	490	12	M 16 x 2	18	Fiat	5002499
UE04 7006	4 + 4	12	570	12	M 16 x 2	18	Fiat	5002545
UE04 7007	4 + 3	18	670	16	M 22 x 2,5	20	Fiat 805	4988796

## MEZZE CATENE FIAT



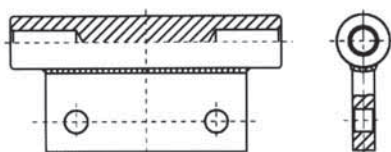
Art.	N. maniglie	Ø maniglie	D	Df	Lf	F	Catena	Rif. orig. Fiat
UE04 8001	3	12	-	M 16x 2 SX	75	M 18 x 1,5	CS 12180	595165
UE04 8002	3	12	12	M 16x 2 SX	75	-	CS 12180	571441
UE04 8003	2	12	-	M 16x 2 SX	95	M 22 x 1,5	CS 12060	5116090
UE04 8004	1	12	14 - 14	M 16x 2 SX	95	-	CS 12060	5112029
UE04 8005	1	12	-	M 16x 2 SX	75	M 22 x 1,5	CS 12050	5131403
UE04 8006	1	12	14 - 14	M 16x 2 SX	75	-	CS 12050	5131402
UE04 8007	1	14	-	M 16x 2 SX	75	M 22 x 1,5	CS 12049	5130652
UE04 8008	1	14	14 - 14	M 16x 2 SX	75	-	CS 12049	5121161
UE04 8009	2	12	-	M 16x 2 SX	75	M 18 x 1,5	CS 12170	4969215
UE04 8010	2	12	12	M 16x 2 SX	75	-	CS 12170	4969214
UE04 8011	4	12	-	M 16x 2 SX	75	M 18 x 1,5	CS 12190	505048
UE04 8012	4	12	12	M 16x 2 SX	75	-	CS 12190	4988445

## MANICOTTO IN GHISA M16x2 PER CATENE "FIAT"



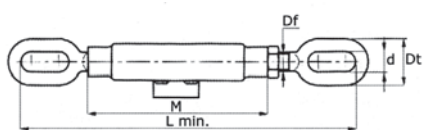
Art.	Impiego catene
UE04 9001	CS12049 - CS12050 - CS12060 - CS12170 - CS12180 - CS12190

## SUPPORTO PER L'ATTACCO DELLE CATENE PORTA ATTREZZI

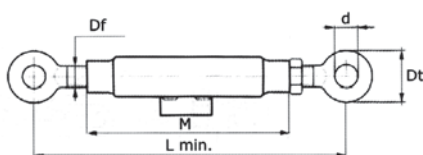


Art.	Impiego catene
UE05 0001	Fiat C 455 - Fiat C 505 - Fiat C 605

## MANICOTTI CON TENDITORI PER CATENE IMBRIGLIAMENTO



Art.	Df	L = min.	M	Dt	d
UE05 1001	M 14 x 2	230	130	32	12
UE05 1002	M 16 x 2	230	130	35	15
UE05 1003	M 18 x 2,5	235	130	38	15
UE05 1004	M 20 x 2,5	270	130	36	14
UE05 1005	M 22 x 2,5	280	130	38	14

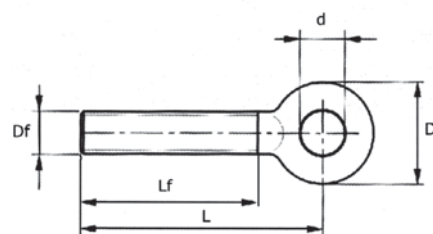
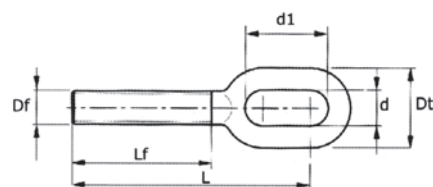


Art.	Df	L = min.	M	Dt	d
UE05 2001	M 16 x 2	200	130	46	18
UE05 2002	M 20 x 2,5	230	130	44	18
UE05 2003	M 22 x 2,5	230	150	50	20



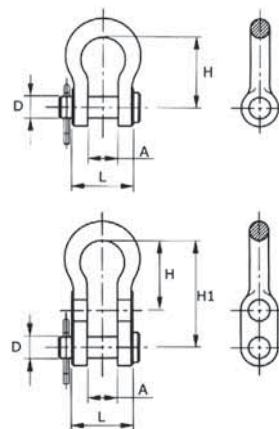
## TIRANTI FILETTATI CON TESTA AD ASOLA E TONDA PER MANICOTTI

Art.	Df	L	Lf	d	d1	DT
UE05 3001	M 14 x 2 Dx	109	65	12	30	32
UE05 3002	M 14 x 2 Sx	109	65	12	30	32
UE05 3003	M 16 x 2 Dx	107	70	15	30	35
UE05 3004	M 16 x 2 Sx	107	70	15	30	35
UE05 3005	M 18 x 2,5 Dx	110	70	15	30	38
UE05 3006	M 18 x 2,5 Sx	110	70	15	30	38
UE05 3007	M 20 x 2,5 Dx	126	75	14	43	36
UE05 3008	M 20 x 2,5 Sx	126	75	14	43	36
UE05 3009	M 22 x 2,5 Dx	130	80	14	43	38
UE05 3010	M 22 x 2,5 Sx	130	80	14	43	38
UE05 4001	M 16 x 2 Dx	98	70	18	46	-
UE05 4002	M 16 x 2 Sx	98	70	18	46	-
UE05 4003	M 20 x 2,5 Dx	115	85	18	44	-
UE05 4004	M 20 x 2,5 Sx	115	85	18	44	-
UE05 4005	M 22 x 2,5 Dx	115	85	20	50	-
UE05 4006	M 22 x 2,5 Sx	115	85	20	50	-



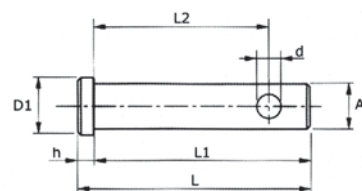
## GRILLI ZINCATI CON PERNO E COPPIGLIA

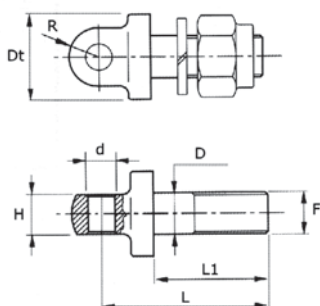
Art.	D Pollici	D Min.	A	L	H-H1	N° fori	Car. lav. Kg
UE05 5001	1/2"	12	18	34	40	1	850
UE05 5002	9/16"	14	18	34	40	1	850
UE05 5003	5/8"	16	20	40	54	1	950
UE05 5004	5/8"	16	20	46	40	1	1200
UE05 5005	9/16"	14 - 14	18	38	50-72	2	850



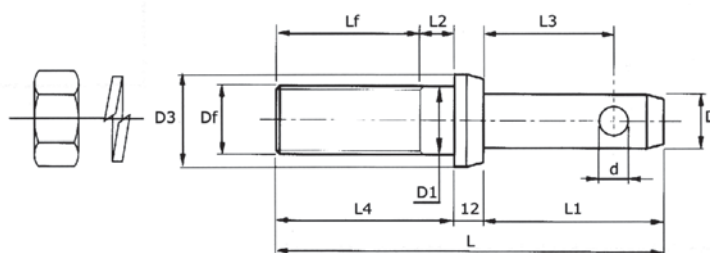
## PERNI PER GRILLI

Art.	A	D1	L	L1	h	L2	d
UE05 6001	12	16	50	47	3	40	4
UE05 6002	14	18	50	47	3	40	4
UE05 6003	16	20	53	50	3	44	4
UE05 6004	16	21	63	60	3	50	4

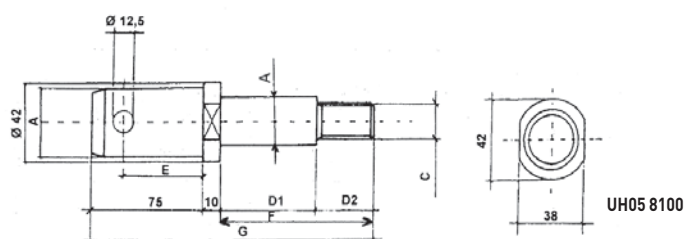


**PERNO AD OCCHIO CON DADO PER CATENE IMBRIGLIAMENTO**


Art.	F	L	L1	R	Dt	D	d	H
UH05 7001	M 16 x 2	65	44	18	36	16	15	11
UH05 7002	M 18 x 2,5	65	44	18	36	18	15	11
UH05 7003	M 20 x 2,5	80	58	21	42	20	18	12
UH05 7004	M 24 x 2	105	65	21	54	28	24	26
UH05 7005	M 20 x 2,5	105	65	21	54	20	20	26

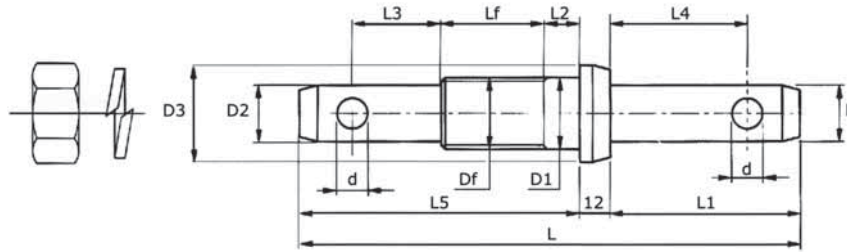
**PERNO PER ATTACCO ATTREZZI**


Art.	D	D1	L1	L2	L3	L4	Df	Lf	d	D3	L	Impiego
UH05 8001	22	28	74	14	50	54	M 22 x 1,5	40	12	38	140	Universale
UH05 8002	28	28	78	20	60	60	M 22 x 1,5	40	12	44	150	Universale
UH05 8003	22	22	74	14	50	54	M 22 x 1,5	40	12	38	140	Universale
UH05 8004	22	20	74	14	50	54	M 20 x 1,5	40	12	38	140	Universale
UH05 8005	28	22	78	14	60	60	M 22 x 1,5	46	12	44	150	Universale
UH05 8006	22	30	78	12	52	46	M 30 x 2	34	12	42	136	Celli
UH05 8007	28	30	78	12	52	46	M 30 x 2	34	12	42	136	Celli
UH05 8008	22	24	74	14	50	54	M 22 x 1,5	40	12	38	140	Maschio
UH05 8009	28	24	78	18	60	60	M 22 x 1,5	42	12	44	150	Maschio
UH05 8010	22	25	74	14	50	54	M 22 x 1,5	40	12	38	140	Sicma
UH05 8011	28	25	78	14	60	60	M 22 x 1,5	46	12	44	150	Sicma
UH05 8012	22	27	74	14	50	54	M 22 x 1,5	40	12	38	140	Nardi
UH05 8013	28	27	78	18	60	60	M 22 x 1,5	42	12	44	150	Nardi

**PERNI ATTACCO ATTREZZI COMPLETI DI DADO E GROWER**


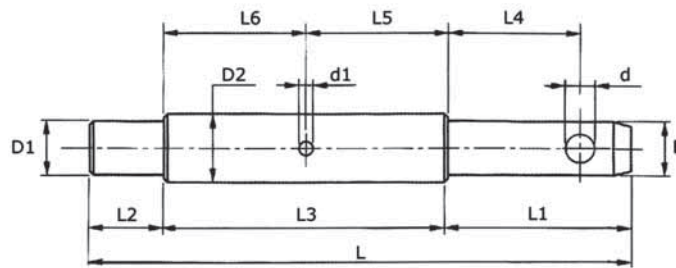
Art.	Applicazione	A mm.	B mm.	C mm.	D1 mm.	D2 mm.	E mm.	F mm.	G mm.
UH05 8100	Verdegiglio	28	26	20 x 1,5	54	30	60	84	169

### PERNO DOPPIO PER ATTACCO ATTREZZI

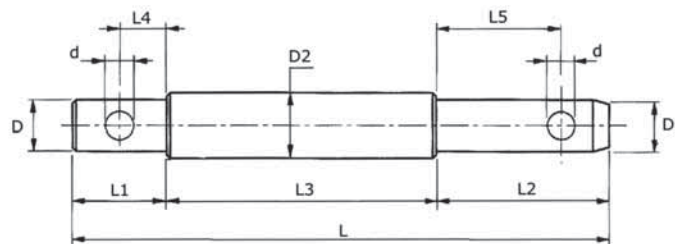


Art.	D	D1	D2	L1	L2	L3	L4	L5	Df	Lf	d	D3	L
UH05 9001	28	28	22	79	14	48	58	108	M 27 x 3	28	12	44	199
UH05 9002	28	25	22	79	14	48	58	108	M 27 x 3	28	12	44	199

### PERNO INTERCAMBIABILE PER ATTACCO ATTREZZI

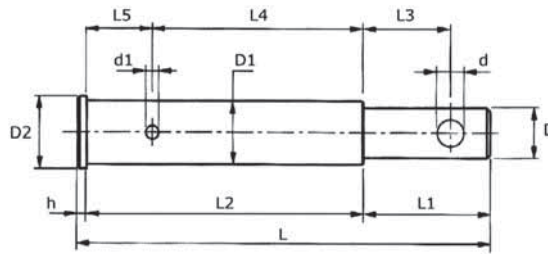


Art.	D	D1	D2	L	L1	L2	L3	L4	L5	L6	d	d1	Rif. orig. Fiat
UH06 0001	22	22	28	201,5	56,5	30	115	38,5	67	48	12	6,3	4954459
UH06 0002	25	22	28	193	53	25	115	38,5	67	48	12	6,3	5102993



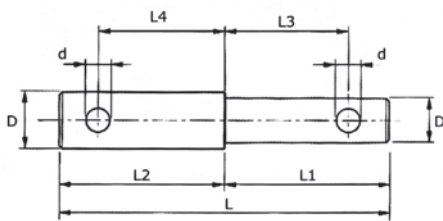
Art.	D	D1	D2	L	L1	L2	L3	L4	L5	d
UH06 2001	22	22	28	210	40	100	70	20	80	12
UH06 2002	19	19	25	210	40	100	70	20	80	12

### PERNO PER ATTACCO ATTREZZI SU TRATTORI FIAT



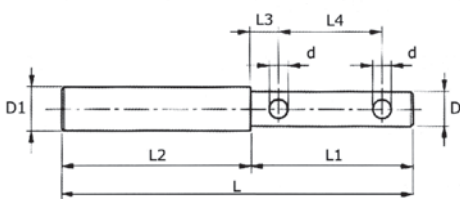
Art.	D	D1	D2	L	L1	L2	H	L3	L4	L5	d	d1	Rif. orig. Fiat
UH06 2001	22	28	32	182,5	56,5	122	4	38,5	93,5	28,5	12	6,3	4954461
UH06 2002	22	28	32	172,5	56,5	122	4	38,5	83,5	28,5	12	6,3	4954562

### PERNO DOPPIO DA SALDARE PER ATTACCO ATTREZZI



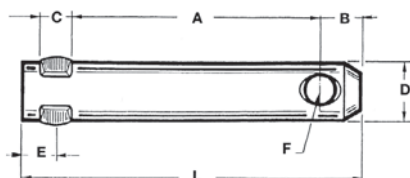
Art.	D	D1	L	L1	L2	L3	L4	d
UH06 3001	22	28	190	105	85	85	62	12

### PERNO UNIVERSALE



Art.	D	D1	L	L1	L2	L3	L4	d
UH06 4001	19	25	180	90	90	18	57	5
UH06 4003	22	28	155	80	75	18	57	5
UH06 4002	22	28	180	90	90	18	57	5

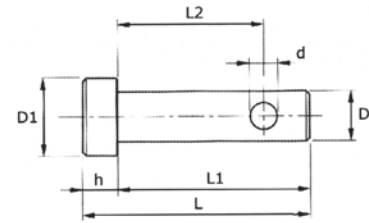
### PERNO PER FRESATRICE «MASCHIO»



Art.	D	A	B	C	E	F	L
UH06 4100	22	93	17	12	12	12	130
UH06 4101	28	100	17	12	18	12	143

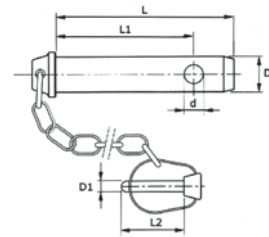
### PERNO D'ATTACCO DA SALDARE

Art.	D	D1	L	L1	H	L2	d
UH06 5001	22	28	95	80	15	60	11,5
UH06 5002	28	34	95	80	15	60	11,5



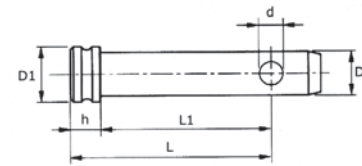
### PERNO PER 3° PUNTO COMPLETO DI CATENA E SPINA A SCATTO

Art.	Cat	D	L	L1	d	D1	L2
UH06 6001	1	19	110	95	11	10	46
UH06 6002	2	25	115	100	11	10	46



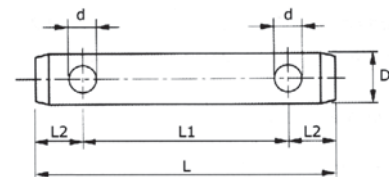
### PERNO PER 3° PUNTO SENZA CATENA E SENZA SPINA

Art.	Cat	D	L	L1	h	D1	d
UH06 7001	1	19	125	85	15	25	12
UH06 7002	2	25	135	95	15	30	12
UH06 7003	3	32	152	105	20	38	12



### PERNO PER 3° PUNTO SENZA CATENA E SENZA SPINA

Art.	Cat	D	L	L1	L2	d
UH06 8012	1	19	115	81	17	12
UH06 8001	1	19	140	96	22	12
UH06 8013	1	19	146	112	17	12
UH06 8002	1	19	170	126	22	12
UH06 8003	1	19	207	163	22	12
UH06 8004	1	19	254	210	22	12
UH06 8005	2	25	144	100	22	12
UH06 8006	2	25	164	120	22	12
UH06 8007	2	25	210	166	22	12
UH06 8008	2	25	254	210	22	12
UH06 8009	2	25	294	250	22	12

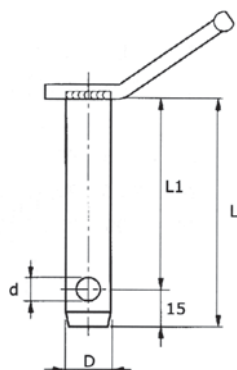


Per bracci inferiori

UH06 8020	1	22	140	96	22	12
UH06 8021	1	22	170	126	22	12

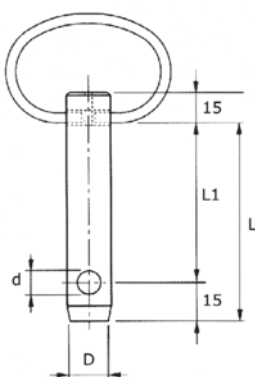


## SPINOTTO DI TRAZIONE



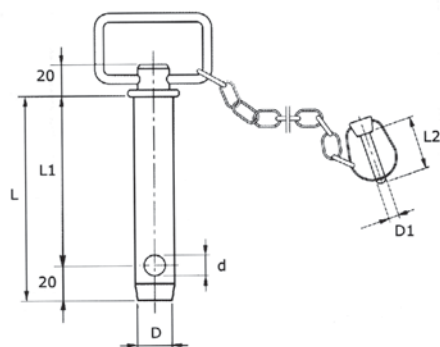
Art.	D	L	L1	d
UH06 9001	16	115	100	8,5
UH06 9002	18	115	100	8,5
UH06 9003	20	135	120	8,5
UH06 9004	22	135	120	12
UH06 9005	24	135	120	12
UH06 9006	26	175	160	12
UH06 9007	28	135	120	12
UH06 9008	28	175	160	12
UH06 9009	30	175	160	12
UH06 9010	32	180	165	12

## SPINOTTO CON MANIGLIA



Art.	D	L	L1	d
UH07 0001	19	125	110	12
UH07 0002	19	180	165	12
UH07 0003	22	135	120	12
UH07 0004	22	180	165	12
UH07 0005	25	135	120	12
UH07 0006	25	180	165	12
UH07 0007	28	135	120	12
UH07 0008	28	180	165	12
UH07 0009	30	180	165	12

## SPINOTTO D'ATTACCO CON CATENA



### SPINOTTI DI TRAZIONE COMPLETI DI COLLARE E MANIGLIA

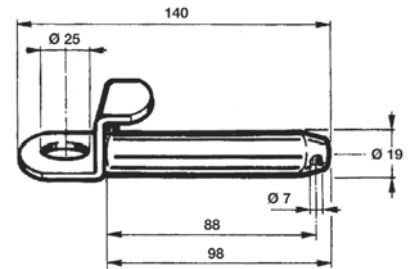
Art.	D	L	L1	d	D1	L2
UH07 1001	19	125	110	6,5	6	42
UH07 1002	19	175	160	6,5	6	42
UH07 1003	22	175	160	6,5	6	42
UH07 1004	25	175	160	6,5	6	42
UH07 1005	28	135	120	10,5	10	46
UH07 1006	28	175	160	6,5	6	42
UH07 1007	32	180	165	10,5	10	46

### SPINOTTI DI TRAZIONE COMPLETI DI COLLARE E MANIGLIA "IMPORT"

Art.	D - Ø (mm.)	L1 (mm.)	Art.	D - Ø (mm.)	L1 (mm.)
UM07 2001	19	112	UM07 2006	28	120
UM07 2002	19	162	UM07 2007	28	162
UM07 2003	22	125	UM07 2008	28	187
UM07 2004	22	162	UM07 2009	32	187
UM07 2005	25	162			

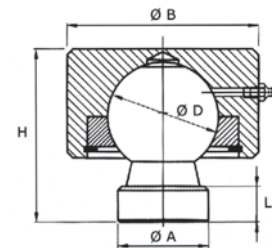
## PERNO ATTACCO TRATTORI FIAT

Art.	Ø D
UM07 3000	Trattori Fiat e vari Rif. orig. Fiat 579877 - 5985498

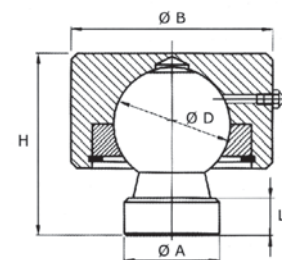
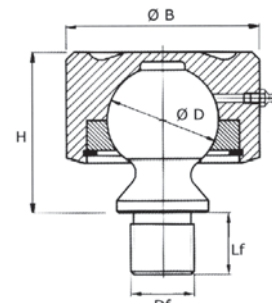


## ATTACCO A SFERA

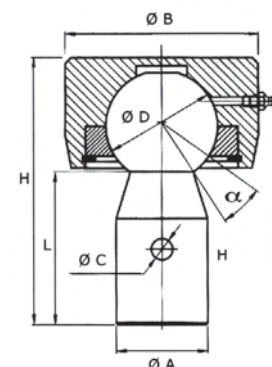
Art.	Ø D	Ø A	Ø B	H	L
UL07 2001	50	40	85	82	20
UL07 2002	60	50	98	100	25
UL07 2003	70	60	105	115	30



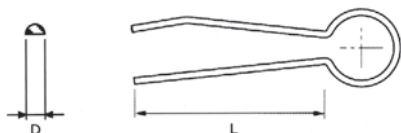
Art.	Ø D	Ø A	Ø B	H	L	Df	Lf
UL07 3001	45	30	110	60	8	-	-
UL07 3002	55	45	95	76	8	-	-
UL07 3003	65	64	107	88	9	-	-
UL07 3004	45	30	110	65	-	M 22 x 1,5	26
UL07 3005	55	45	95	77	-	M 32 x 2	31



Art.	Ø D	Ø A	Ø B	Ø C	H	L	A
UL07 4001	45	36	88	-	106	61	25
UL07 4002	45	36	88	8,4	106	58,5	-
UL07 4003	55	36	92	8,4	118,5	62	-

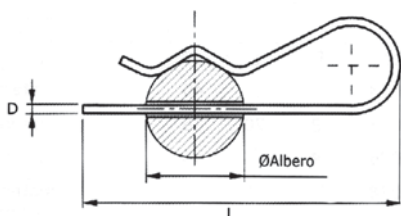


### COPPIGLIE A FORCELLA TIPO FIAT



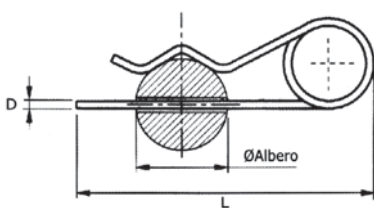
Art.	D	L
UM07 5001	3 x 1,5	36
UM07 5002	5 x 2,5	56

### COPPIGLIE A MOLLA TIPO R



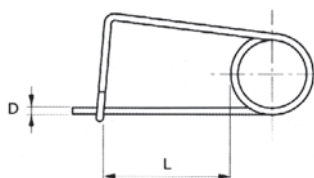
Art.	D	L	Ø Albero
UM08 0001	1,8	33	Da 6 a 8
UM08 0002	2	46	Da 10 a 12
UM08 0003	2,5	62	Da 11 a 13
UM08 0004	3	62	Da 12 a 16
UM08 0005	3,5	72	Da 15 a 21
UM08 0006	4	82	Da 16 a 30
UM08 0007	5	100	Da 20 a 35
UM08 0008	6	105	Da 28 a 35
UM08 0009	7	160	Da 40 a 50
UM08 0010	8	165	Da 40 a 55

### COPPIGLIE A MOLLA DOPPIO GIRO TIPO R



Art.	D	L	Ø Albero
UM08 1001	3	84	Da 12 a 16
UM08 1002	3,5	85	Da 15 a 21
UM08 1003	4	98	Da 16 a 30
UM08 1004	4,5	100	Da 18 a 30
UM08 1005	5	110	Da 20 a 35
UM08 1006	6	130	Da 28 a 45
UM08 1007	7	155	Da 40 a 50

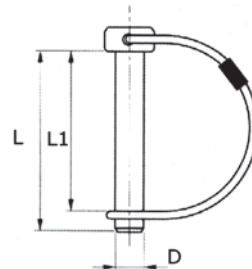
### MOLLE FERMAGANCI



Art.	D	L
UM08 2001	3	60
UM08 2002	4	100
UM08 2003	5	90
UM08 2004	6	100

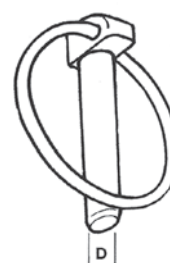
## SPINOTTI PER MOTOZAPPA

Art.	D	L	L1
UM08 3001	6	45	40
UM08 3000	7	56	45
UM08 3003	8	45	40
UM08 3002	8	70	56
UM08 3004	10	45	40
UM08 3005	10	70	56
UM08 3006	12	70	56
UM08 3007	12	90	70



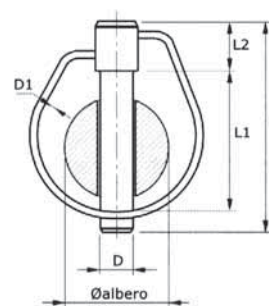
## SPINE A SCATTO "IMPORT"

ART.	Spine a scatto - D	Confezione
UM08 4104	Spina a scatto Ø 4,5 mm.	50
UM08 4106	Spina a scatto Ø 6 mm.	50
UM08 4107	Spina a scatto Ø 7 mm.	50
UM08 4108	Spina a scatto Ø 8 mm.	50
UM08 4109	Spina a scatto Ø 9 mm.	50
UM08 4110	Spina a scatto Ø 10 mm.	50
UM08 4111	Spina a scatto Ø 11 mm.	50



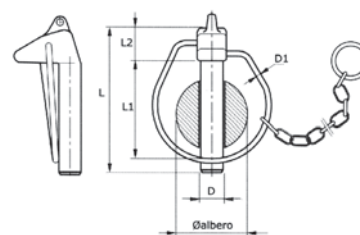
## SPINE A SCATTO "EXTRA"

Art.	D	L	L2	D1	L1	Ø Albero
UM08 4001	4,5	34	6,5	2	30	Da 10 a 15
UM08 4002	5	46	7	2,4	34	Da 14 a 18
UM08 4003	6	48	8	2,4	32	Da 18 a 22
UM08 4004	7	54	9	3	39	Da 20 a 24
UM08 4005	8	56	10	3,4	36	Da 22 a 28
UM08 4006	9	58	12	3,4	37	Da 26 a 32
UM08 4007	10	58	12	3,4	35	Da 28 a 36
UM08 4008	11	58	12	3,4	35	Da 32 a 42

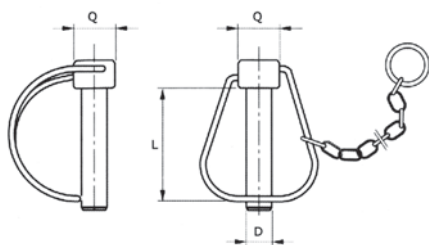


## SPINE A SCATTO Ø 11 - Ø 16 PER CONO GUIDA ATTACCO RAPIDO

Art.	D	L	L2	D1	L1	Ø Albero	Note
UM08 5001	11	70	17	4	48	Da 36 a 42	Con catenella
UM08 5002	11	70	17	4	48	Da 36 a 42	-
UM08 5003	16	80	25	4	48	Da 36 a 42	Con catenella
UM08 5004	16	80	25	4	48	Da 36 a 42	-

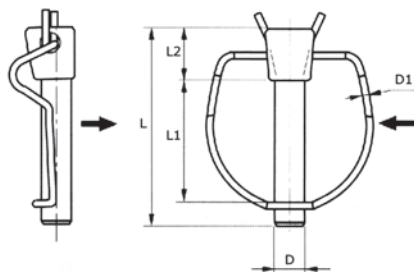


### SPINA A SCATTO A TESTA QUADRA CON CATENA



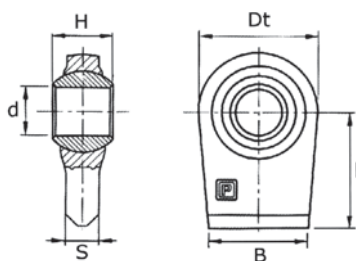
Art.	D	L	q
UM08 6001	12	55	18
UM08 6002	14	55	18
UM08 6003	16	55	20
UM08 6004	19	75	25

### SPINA DI SICUREZZA



Art.	D	L	L2	L1	D1	Ø Albero
UM08 7001	11	64	14	42	3	Da 30 a 42

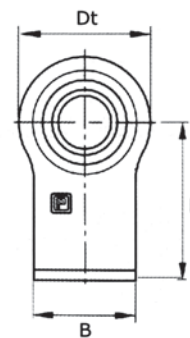
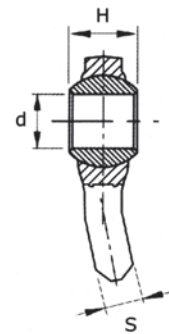
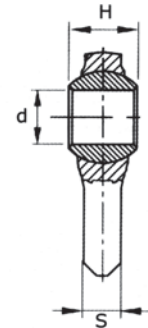
### SUPPORTO A SNODO SFERICO PER BRACCI INFERIORI - FIANCHI INCLINATI



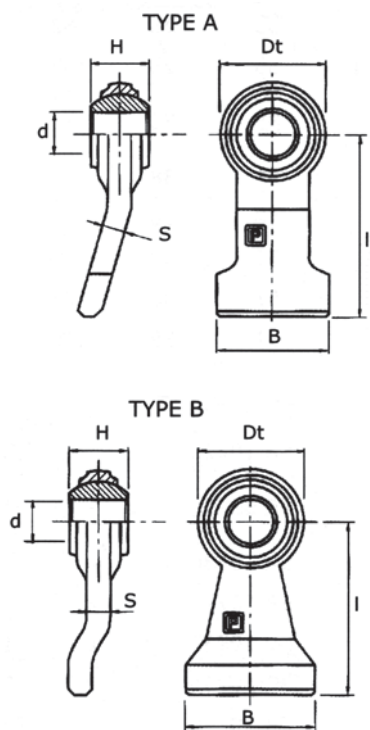
Art.	Cat.	d (A 12)	H (H 11)	B	S	D	I
UN08 8001	-	19	35	60	18	67	50
UN08 8002	1	22,1	35	60	18	67	50
UN08 8003	1	22,1	35	58	18	67	75
UN08 8004	2	28,4	45	70	18	85	80
UN08 8005	1/2	22,1/28,4	45	70	18	85	80
UN08 8006	2	28,4	35	70	18	85	80

**SUPPORTO A SNODO SFERICO AD ESTREMITÀ RETTANGOLARE - FIANCHI DIRITTI**

Art.	Cat.	d (A 12)	H (H 11)	B	S	Dt	I	Type
UN09 0001	-	14	32	30	11	46	60	A
UN09 0002	-	16	20	30	11	46	60	A
UN09 0003	-	19	44	52	17	52	50	A
UN09 0004	-	18	35	50	15	65	43	A
UN09 0005	-	19	35	50	15	65	43	A
UN09 0006	1	22,1	35	50	15	65	43	A
UN09 0007	1	22,1	35	50	15	68	90	A
UN09 0008	1	22,1	35	70	15	66	70	A
UN09 0009	-	25,4	38	70	15	78	80	A
UN09 0010	2	28,4	38	60	15	78	80	A
UN09 0011	1	22,1	35	70	15	68	90	A
UN09 0012	1	22,1	35	70	18	76	50	A
UN09 0013	-	25,4	35	70	18	76	50	A
UN09 0014	-	26	35	70	18	76	50	A
UN09 0015	2	28,4	35	70	18	76	50	A
UN09 0016	1	22,1	35	70	19	83	55	A
UN09 0017	-	25,4	35	70	19	83	55	A
UN09 0018	2	28,4	35	70	19	83	55	A
UN09 0019	2	28,4	45	70	19	83	55	A
UN09 0020	2	28,4	45	70	20	82	55	A
UN09 0021	-	25,4	38	70	23	80	80	A
UN09 0022	2	28,4	38	70	23	80	80	A
UN09 0023	2	28,4	45	70	23	80	80	A
UN09 0024	-	25,4	45	70	22	80	65	A
UN09 0025	2	28,4	45	70	22	80	65	A
UN09 0026	1/2	22,1/28,4	45	70	22	80	65	A
UN09 0027	2	28,4	45	76	17	90	82	A
UN09 0028	2	28,4	44	70	21	83	110	A
UN09 0029	-	28,4	45	70	22	96	65	A
UN09 0030	-	32	45	70	22	96	65	A
UN09 0031	-	34	45	70	22	96	65	A
UN09 0032	-	35	45	70	22	96	65	A
UN09 0033	3	37	45	70	22	96	65	A
UN09 0034	-	38	45	80	24	108	65	A
UN09 0035	-	34	45	80	24	108	65	A
UN09 0036	3	37	45	80	24	108	65	A
UN09 0037	2	28,4	45	80	24	108	65	A
UN09 0038	-	35	45	80	24	108	65	A
UN09 0039	-	42	45	80	24	108	65	A
UN09 0040	-	28,4	45	94	30	94	86	A
UN09 0041	-	38	45	94	30	94	86	A

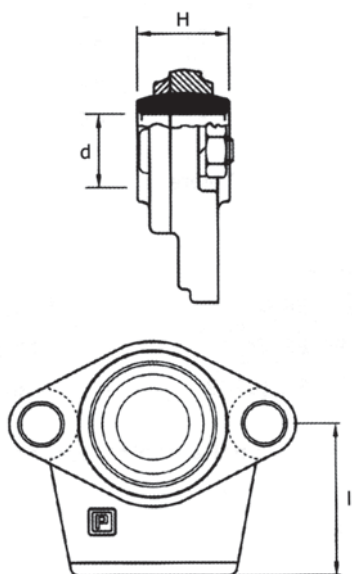


**SUPPORTO A SNODO SFERICO PER BRACCI INFERIORI - PIATTO PIEGATO TIPO FIAT 1000-1300**



Art.	Cat.	d (A 12)	H (H 11)	B	S	Dt	I	Type	Rif. Orig. Fiat
UN09 1001	2	28,4	45	100	21	80	130	A	01930293
UN09 1002	2	28,4	45	100	32	100	130	B	-
UN09 1003	-	35	45	100	32	100	130	B	4997106
UN09 1004	3	37	45	100	32	100	130	B	-

**SUPPORTO SNODO SFERICO SMONTABILE TIPO FIAT**



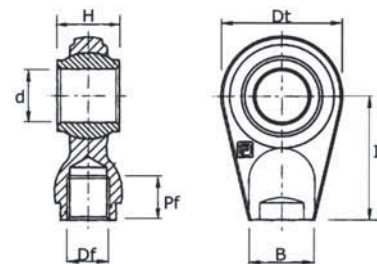
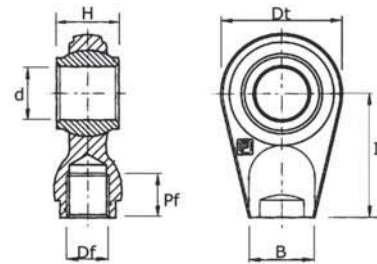
Art.	Cat.	d (A 12)	H (H 11)	I
UN09 2001	2	28,4	45	65
UN09 2002	-	32	45	65
UN09 2003	-	34	45	65
UN09 2004	-	35	45	65
UN09 2005	3	37	45	65



## SUPPORTO A SNODO SFERICO AD ESTREMITÀ ROTONDA PER CILINDRI IDRAULICI

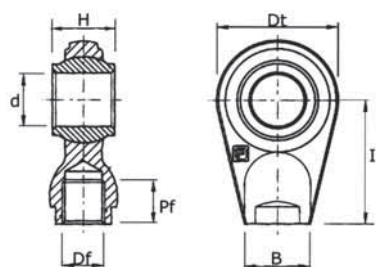
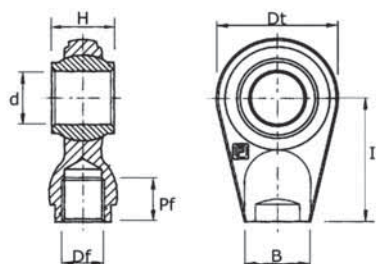
DA SALDARE O CON FILETTATURA INTERNA

Art.	Cat.	d (A 12)	H (H 11)	B (Ø)	Dt	I	Df	Pf	Note
UN09 3001	-	14	44	25	55	50	-	-	Base grezza
UN09 3002	1	19	30	25	55	50	-	-	Base grezza
UN09 3003	1	19	44	25	55	50	-	-	Base grezza
UN09 3004	-	20	44	25	55	50	-	-	Base grezza
UN09 3005	1	19	44	26	55	65	-	-	Base grezza
UN09 3005 B	1	19	44	30 x 13	62	34	-	-	Base grezza
UN09 3006	-	20	44	30 x 13	62	34	-	-	Base grezza
UN09 3007	-	22,1	44	30 x 13	62	34	-	-	Base grezza
UN09 3008	1	19	44	30	62	50	-	-	Base spianata
UN09 3009	-	22,1	44	34	62	58	-	-	Base spianata
UN09 3010	1	19	44	34	62	58	-	-	Base spianata
UN09 3011	-	20	44	34	62	58	-	-	Base spianata
UN09 3012	1	19	44	34	62	60	-	-	Base spianata
UN09 3013	-	22,1	44	34	62	60	-	-	Base spianata
UN09 3014	-	20	44	34	62	60	-	-	Base spianata
UN09 3015	1	19	35	26	62	50	-	-	Base spianata
UN09 3016	-	22,1	35	26	62	50	-	-	Base spianata
UN09 3017	1	19	35	30	70	46	-	-	Base spianata
UN09 3018	-	22,1	51	38	75	65	-	-	Base spianata
UN09 3019	2	25,4	40	38	75	65	-	-	Base spianata
UN09 3020	1	19	51	38	75	65	-	-	Base spianata
UN09 3021	-	30	51	38	75	65	-	-	Base spianata
UN09 3022	2	25,4	51	38	75	65	-	-	Base spianata
UN09 3023	2	25,4	51	31	75	70	-	-	Base spianata
UN09 3024	2	25,4	51	45	72	70	-	-	Base spianata
UN09 3025	1	19	51	45	72	70	-	-	Base spianata
UN09 3026	-	22,1	51	45	72	70	-	-	Base spianata
UN09 3027	-	30	51	45	72	70	-	-	Base spianata
UN09 3029	1	19	51	50	85	70	-	-	Base spianata
UN09 3030	2	25,4	51	50	85	70	-	-	Base spianata
UN09 3031	-	22,1	51	50	85	70	M 27 x 2	27	Base spianata

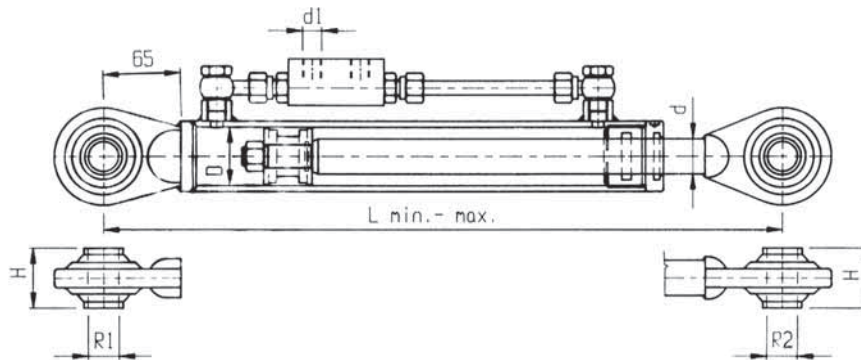


**SUPPORTO A SNODO SFERICO AD ESTREMITÀ ROTONDA PER CILINDRI IDRAULICI**

DA SALDARE O CON FILETTATURA INTERNA

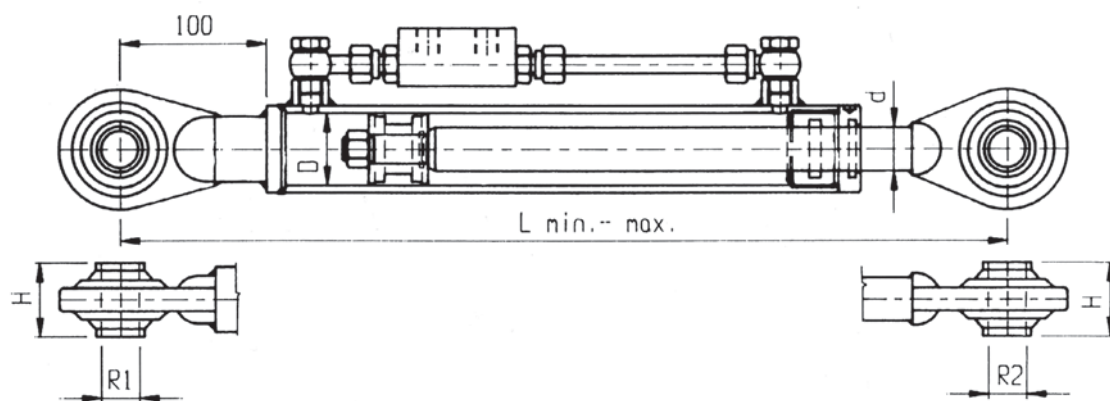


Art.	Cat.	d (A 12)	H (H 11)	B (Ø)	Dt	I	Df	Pf	Note
UN09 3032	1	19	51	50	85	70	M 27 x 2	27	Base spianata
UN09 3033	2	25,4	51	50	85	70	M 27 x 2	27	Base spianata
UN09 3034	-	30	51	50	85	70	-	-	Base spianata
UN09 3035	-	30	51	50	85	70	M 27 x 2	27	Base spianata
UN09 3036	2	25,4	51	40	90	85	-	-	Base spianata
UN09 3037	-	30	51	40	90	85	-	-	Base spianata
UN09 3038	3	32	51	40	90	85	-	-	Base spianata
UN09 3039	3	32	51	40	90	85	M 27 x 2	27	Base spianata
UN09 3040	-	35	55	40	90	85	-	-	Base spianata
UN09 3041	1/2	19/25,4	45 x 45	40	90	85	-	-	Base spianata
UN09 3042	2	25,4	51	50	83	65	-	-	Base spianata
UN09 3043	-	29	55	50	83	65	-	-	Base spianata
UN09 3044	-	30	42	50	83	65	-	-	Base spianata
UN09 3045	3	32	51	50	83	65	-	-	Base spianata
UN09 3046	-	30	55	50	83	65	-	-	Base spianata
UN09 3047	-	35	35	50	83	65	-	-	Base spianata
UN09 3048	-	35	55	50	83	65	-	-	Base spianata
UN09 3049	-	29	55	50	92	65	-	-	Base spianata
UN09 3050	-	30	55	50	92	65	-	-	Base spianata
UN09 3051	-	30	42	50	92	65	-	-	Base spianata
UN09 3052	3	32	51	50	92	65	-	-	Base spianata
UN09 3053	-	35	35	50	92	65	-	-	Base spianata
UN09 3054	-	40	75	58	108	60	-	-	Base spianata
UN09 3055	-	45	75	58	108	60	-	-	Base spianata
UN09 3056	-	50	75	58	108	60	-	-	Base spianata
UN09 3057	-	40	75	60	108	85	-	-	Base spianata
UN09 3058	-	40	75	60	108	85	M 38 x 2	28	Base spianata
UN09 3059	-	45	75	60	108	85	-	-	Base spianata
UN09 3060	-	45	75	60	108	85	M 38 x 2	28	Base spianata
UN09 3061	-	50	75	60	108	85	-	-	Base spianata
UN09 3062	-	50	75	60	108	85	M 38 x 2	28	Base spianata
UN09 3063	-	60 (H7)	100	75	140	87	-	-	

**TERZI PUNTI IDRAULICI SNODO/SNODO**

**TERZI PUNTI IDRAULICI, COMPLETI DI VALVOLA DI BLOCCO PILOTATA A DOPPIO EFFETTO**

Art.	Potenza trattore	Cat.	Rotule di Ø		Alesaggio Ø	Stelo	Corsa mm.	H	Lunghezza Min. - Max
			Lato	Lato					
UR10 5001	FINO A 60 HP	1	19	19	50	30	160	44	421 - 581
UR10 5002		1	19	19	50	30	210	44	471 - 681
UR10 5003		1	19	19	50	30	280	44	541 - 821
UR10 5004		1	19	19	50	30	400	44	661 - 1061
UR10 5005		2	25,4	25,4	50	30	160	51	431 - 591
UR10 5006		2	25,4	25,4	50	30	210	51	481 - 691
UR10 5007		2	25,4	25,4	50	30	280	51	551 - 831
UR10 5008		2	25,4	25,4	50	30	400	51	671 - 1071
UR10 5009	DA 60 HP A 80 HP	2	25,4	25,4	65	35	160	51	451 - 611
UR10 5010		2	25,4	25,4	65	35	210	51	501 - 711
UR10 5011		2	25,4	25,4	65	35	280	51	571 - 851
UR10 5012		2	25,4	25,4	65	35	400	51	691 - 1091
UR10 5013	DA 80 HP A 120 HP	2	25,4	25,4	80	40	160	51	458 - 618
UR10 5014		2	25,4	25,4	80	40	210	51	508 - 718
UR10 5015		2	25,4	25,4	80	40	280	51	578 - 858
UR10 5016		2	25,4	25,4	80	40	400	51	698 - 1098

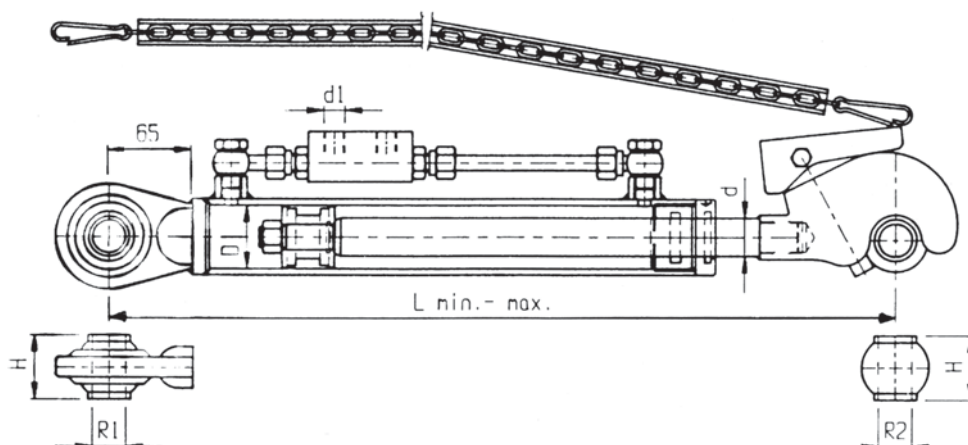
**TERZI PUNTI IDRAULICI SNODO/SNODO**



Art.	Rotule		Cilindro D	Stelo d	Corsa Mm.	Att. d1	Largh. H	Lunghezza	
	R1	R2						Min.	Max
UR10 6001	19	19	50	30	160	3/8"	44	466	626
UR10 6002	19	19	50	30	210	3/8"	44	516	726
UR10 6003	19	19	50	30	280	3/8"	44	586	866
UR10 6004	19	19	50	30	400	3/8"	44	706	1106
UR10 6005	25,8	25,8	50	30	160	3/8"	51	466	626
UR10 6006	25,8	25,8	50	30	210	3/8"	51	516	726
UR10 6007	25,8	25,8	50	30	280	3/8"	51	586	866
UR10 6008	25,8	25,8	50	30	400	3/8"	51	706	1106
UR10 6009	25,8	25,8	65	35	160	3/8"	51	486	646
UR10 6010	25,8	25,8	65	35	210	3/8"	51	536	746
UR10 6011	25,8	25,8	65	35	280	3/8"	51	606	886
UR10 6012	25,8	25,8	65	35	400	3/8"	51	726	1126
UR10 6013	25,8	25,8	80	40	160	3/8"	51	493	653
UR10 6014	25,8	25,8	80	40	210	3/8"	51	543	753
UR10 6015	25,8	25,8	80	40	280	3/8"	51	613	893
UR10 6016	25,8	25,8	80	40	400	3/8"	51	733	1133

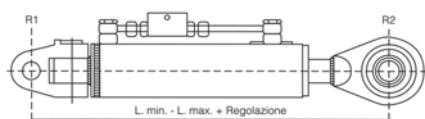
## BRACCIO TERZO PUNTO A REGOLAZIONE IDRAULICA CON GANCIO RAPIDO

COMPLETO DI VALVOLA DI BLOCCO PILOTATA A DOPPIO EFFETTO



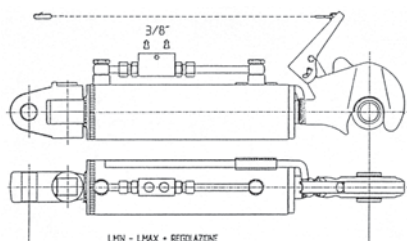
Art.	Potenza trattore	Cat.	Rotule di Ø		Alesaggio Ø	Stelo	Corsa mm.	H.	Lunghezza Min. - Max
			Lato	Lato					
UR10 7001	FINO A 60 HP	2	25,4	25,4	50	30	160	51	481 - 661
UR10 7005		2	25,4	25,4	50	30	160	51	501 - 661
UR10 7002		2	25,4	25,4	50	30	210	51	531 - 741
UR10 7003		2	25,4	25,4	50	30	280	51	601 - 881
UR10 7004		2	25,4	25,4	50	30	400	51	721 - 1121
UR10 7013	DA 60 HP A 80 HP	2	25,4	25,4	65	35	160	51	500 - 660
UR10 7006		2	25,4	25,4	65	35	210	51	551 - 761
UR10 7007		2	25,4	25,4	65	35	280	51	620 - 900
UR10 7008		2	25,4	25,4	65	35	400	51	741 - 1141
UR10 7009	DA 80 HP A 120 HP	2	25,4	25,4	80	40	160	51	508 - 668
UR10 7010		2	25,4	25,4	80	40	210	51	558 - 768
UR10 7011		2	25,4	25,4	80	40	280	51	628 - 908
UR10 7012		2	25,4	25,4	80	40	400	51	748 - 1148

## TERZI PUNTI IDRAULICI SNODATO/SNODO



Art.	Ø Foro		Cilindro D	Stelo d	Corsa Mm.	Att. d1	Largh. H	Lunghezza	
	R1	R2						Min.	Max
UR10 8001	25,8	25,8	50	30	160	3/8"	51	476	636
UR10 8002	25,8	25,8	50	30	210	3/8"	51	526	736
UR10 8003	25,8	25,8	50	30	280	3/8"	51	596	876
UR10 8004	25,8	25,8	50	30	400	3/8"	51	716	1116
UR10 8005	25,8	25,8	65	35	160	3/8"	51	496	656
UR10 8006	25,8	25,8	65	35	210	3/8"	51	546	756
UR10 8007	25,8	25,8	65	35	280	3/8"	51	616	896
UR10 8008	25,8	25,8	80	40	400	3/8"	51	736	1136
UR10 8009	25,8	25,8	80	40	160	3/8"	51	503	663
UR10 8010	25,8	25,8	80	40	210	3/8"	51	553	763
UR10 8011	25,8	25,8	80	40	280	3/8"	51	623	903
UR10 8012	25,8	25,8	80	40	400	3/8"	51	743	1143
UR10 8013	25	25	90	45	210	3/8"	51	569	779
UR10 8014	25	25	90	45	280	3/8"	51	639	919
UR10 8025	32	32	90	45	210	3/8"	51	569	779
UR10 8026	32	32	90	45	280	3/8"	51	639	919

## TERZI PUNTI IDRAULICI ATTACCO SNODATO/GANCIO RAPIDO



Art.	Ø Foro		Cilindro D	Stelo d	Corsa Mm.	Att. d1	Largh. H	Lunghezza	
	R1	R2						Min.	Max
UR10 9001	25	25	90 x 105	45	210	3/8"	51	631	841
UR10 9002	25	25	90 x 105	45	280	3/8"	51	701	981
UR10 9015	32	32	90 x 105	45	210	3/8"	51	631	841
UR10 9016	32	32	90 x 105	45	280	3/8"	51	701	981

## KIT TUBI DI COLLEGAMENTO COMPLETI DI INNESTI RAPIDI PER TERZI PUNTI IDRAULICI



Art.	Impiego catene
UT20 0300	Due tubi 3/8" R2 lungh. mm 850 - due innesti rapidi maschi a valvola, attacco 1/2" completi di tappi parapolvere 1 raccordo curvo con Nipples 3/8" 1 raccordo ad occhio con vite 3/8"